

under the funding programme

Horizon 2020

SC5-16-2016-2017

Project acronym:

INTERMIN

INTERNATIONAL NETWORK OF RAW MATERIALS TRAINING CENTRES

Project duration: 1 February 2018 – 31 January 2021

Project total cost: 1,266,021.25€

EU contribution: 1,266,021.25€

Coordinating entity: Geological Survey of Spain

Friday, November 24, 2017

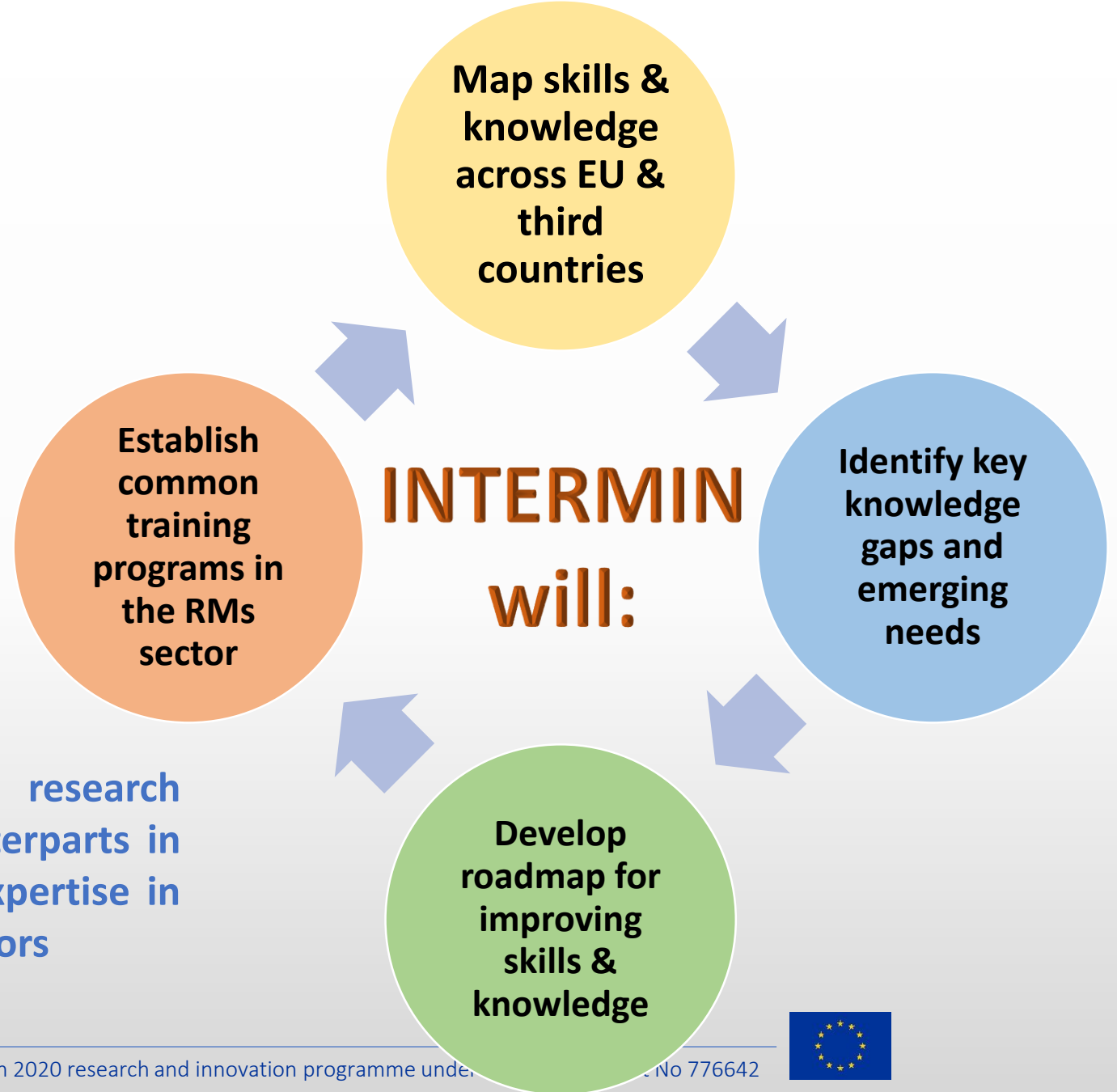


Experts from organisations representing most of the world and having in mind a potential market of 550.000 earth science related professionals, will cooperate to:

Create a self-sustainable long-term lasting international network of technical and vocational training centres for professionals in the mineral raw materials' sector by considering:

- current and future employers' needs and available skills provision;
- the dynamic balance of demand and educational supply in different world regions.





INTERMIN involves educational and research institutions in the EU and the leading counterparts in third countries, based on specific country expertise in the primary and secondary raw materials sectors



INTERMIN

THE CONSORTIUM



1. IGME Spain,
2. EuroGeoSurveys,
3. IGME Greece
4. Geological Survey of Hungary MFGL
5. Geological Survey of Portugal. LNEG
6. Czech Republic GSC.
7. Ukraina Geoinform
8. **Polish Association of Mineral Asset Valuers PAMAV**
9. BRGM,
10. ASGMI Association of Iberoamerican Geological Surveys
11. La Palma Research Centre LPRC
12. Universidad Politécnica de Madrid UPM
13. **EFG European Federation of Geologists**
14. Montanuniversitat Leoben MUL
15. CCOP GeoScience in East and Southeast Asia
16. **AGI American Geological Institute**
17. UQ Universities of Queensland & Western Australia
18. **Young Earth Scientists Network YES**
19. SGU

- 4 Professional Organizations
- 5 Training & Educational Organizations
- 10 Employers



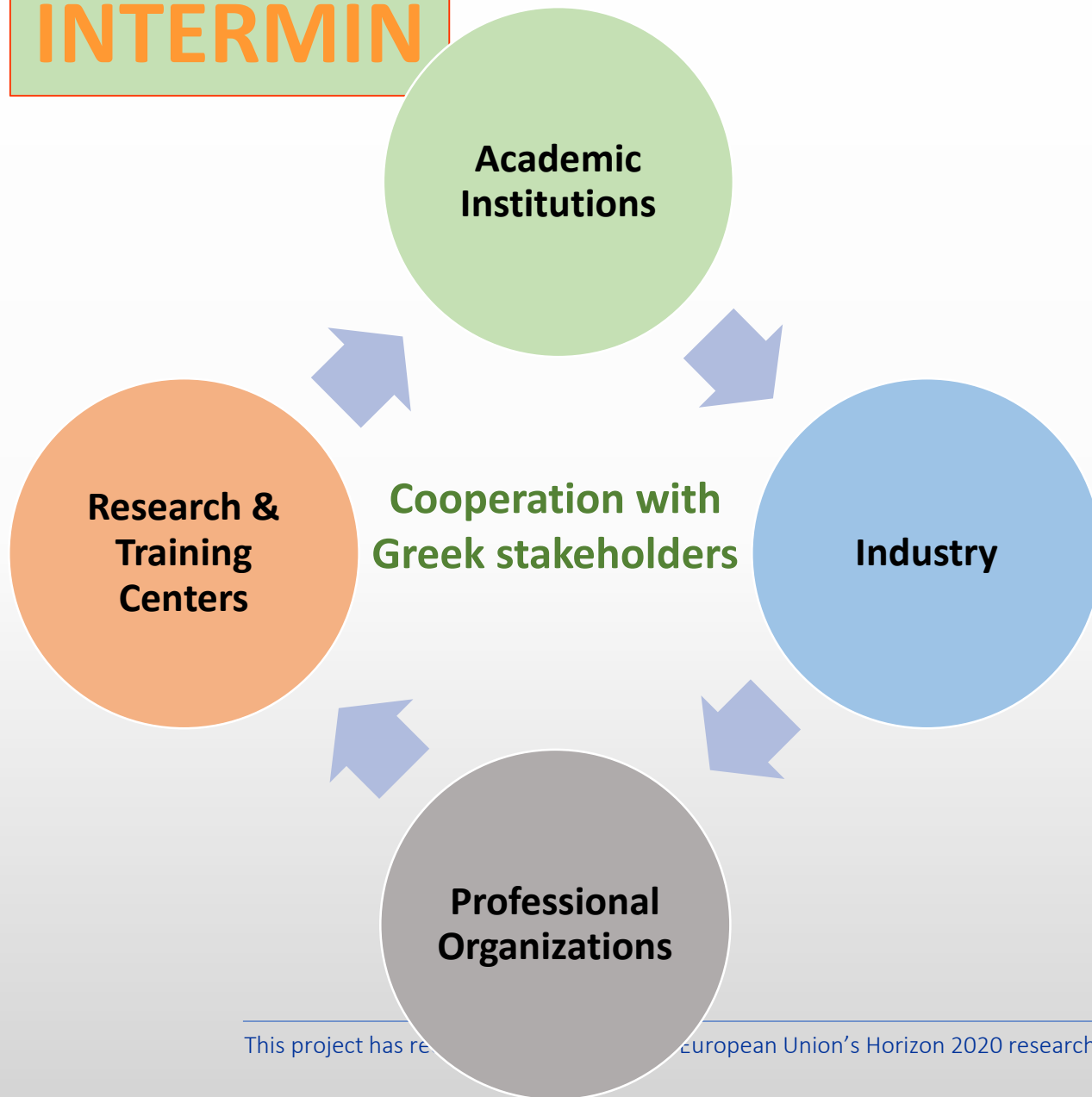
Name of the organization	Geographical coverage
UN ENVIRONMENT, The United Nations Environment Programme	International
United Nations Educational, Scientific and Cultural Organization (UNESCO)	International
United Nations Development Programme (UNDP)	International
<u>UNECA</u> , United Nations Economic Commission for Africa	Africa
European Association of Mining Industries, Metal Ores & Industrial Minerals (Euromines)	Europe
European Technology Platform on Sustainable Mineral Resources	Europe
International Union of Geological Sciences (IUGS)	International
International Association for Promoting Geoethics (IAPG)	International
IndustriALL Global Union	International
Anthropogenic Resources Working Group UNECE	International



- Will contribute to the implementation of the Raw Materials Initiative in particular in terms of establishing and maintaining strong and sustainable relationships with the leading training institutions from advanced mining countries;
- Increase the EU competence and expertise in the field of the primary and secondary raw materials;
- Will improve the availability of qualified and skilled workforce leading to higher competitiveness of the EU raw materials industry;
- Will foster international cooperation with industry, government, academia, NGOs and other stakeholders, from key raw materials producing countries and regions.



INTERMIN



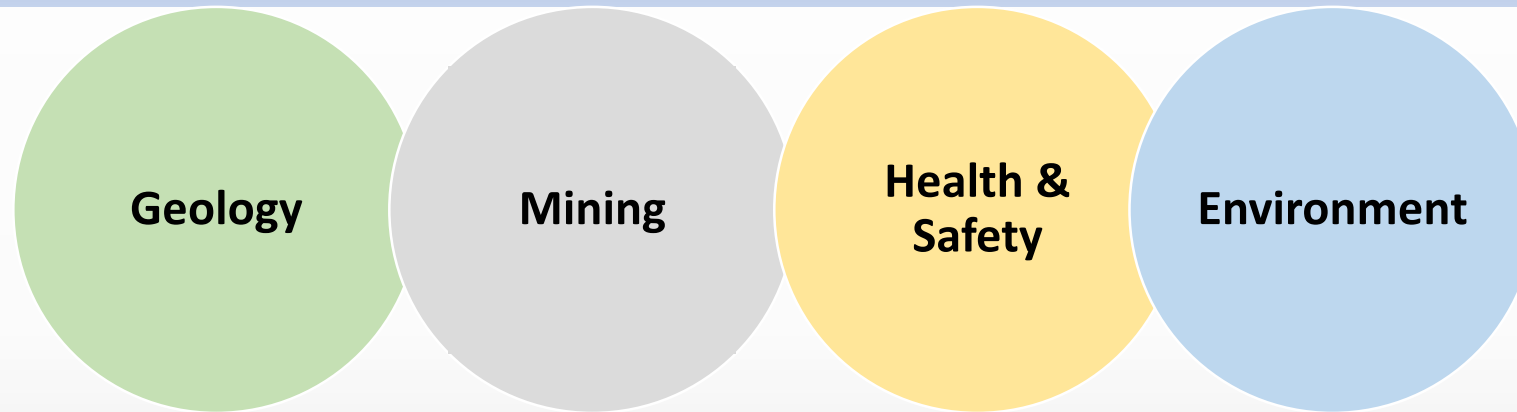
Greek contribution to the project:

- Map key existing technical and vocational training courses (mid-level and high-level) that will be incorporated as members of the network,
- Identify existing and emerging skill gaps in the Greek raw materials sector, considering existing and future employers' needs,
- Contribute to the development of a roadmap to close identified gaps and enhance existing training programs,
- Increase visibility of Greek training capabilities in the raw materials sector.



WP1: Worldwide mapping of educational-research programs

will provide an overview of the current status of technical and vocational training offered for Raw Materials professionals including, but not limited to,



Initially, only post graduate university education and specific cases of technical training (such as drillers) will be considered.

Later, the training performed by private companies and Institutions (such as geological surveys) will be included too.

Regarding University training, first 2 professions will be evaluated: Geologists and Mining Engineers.

INTERMIN



Kiki Hatzilazaridou

IGME GR, Department of Economic Geology

E-mail: kikihatz@igme.gr

Tel.: 2131337162

