

EIT Raw Materials H2020 INTERMIN

Madrid 2019

EIT RawMaterials GmbH, Berlin, Germany



EIT (European Institute of Innovation and Technology) and EIT RawMaterials Innovation Community

EIT RawMaterials is:

- A **thematic knowledge and innovation community** that develop innovative products and services, foster new business, encourage growth and nurture young entrepreneurial talent
- Characterised by a **high degree of integration**, a long-term perspective, efficient governance, a co-location model and the **entrepreneurial culture**
- A Unique partnership that increase Europe's capacity for innovation by **bringing together leading companies, universities and research organisations**
- Driven by a pursuit of **excellence**



EIT (European Institute of Innovation and Technology)

The EIT is an EU body that enhances Europe's ability to innovate by nurturing young entrepreneurial talent and supporting new ideas through the Innovation Communities.

The EIT is the first EU initiative bringing together the three sides of the 'knowledge triangle': Business (companies and SMEs), Higher Education Institutions and Research Centres.

The EIT aims to increase the cooperation and integration between education, business and research to facilitate the transition from:



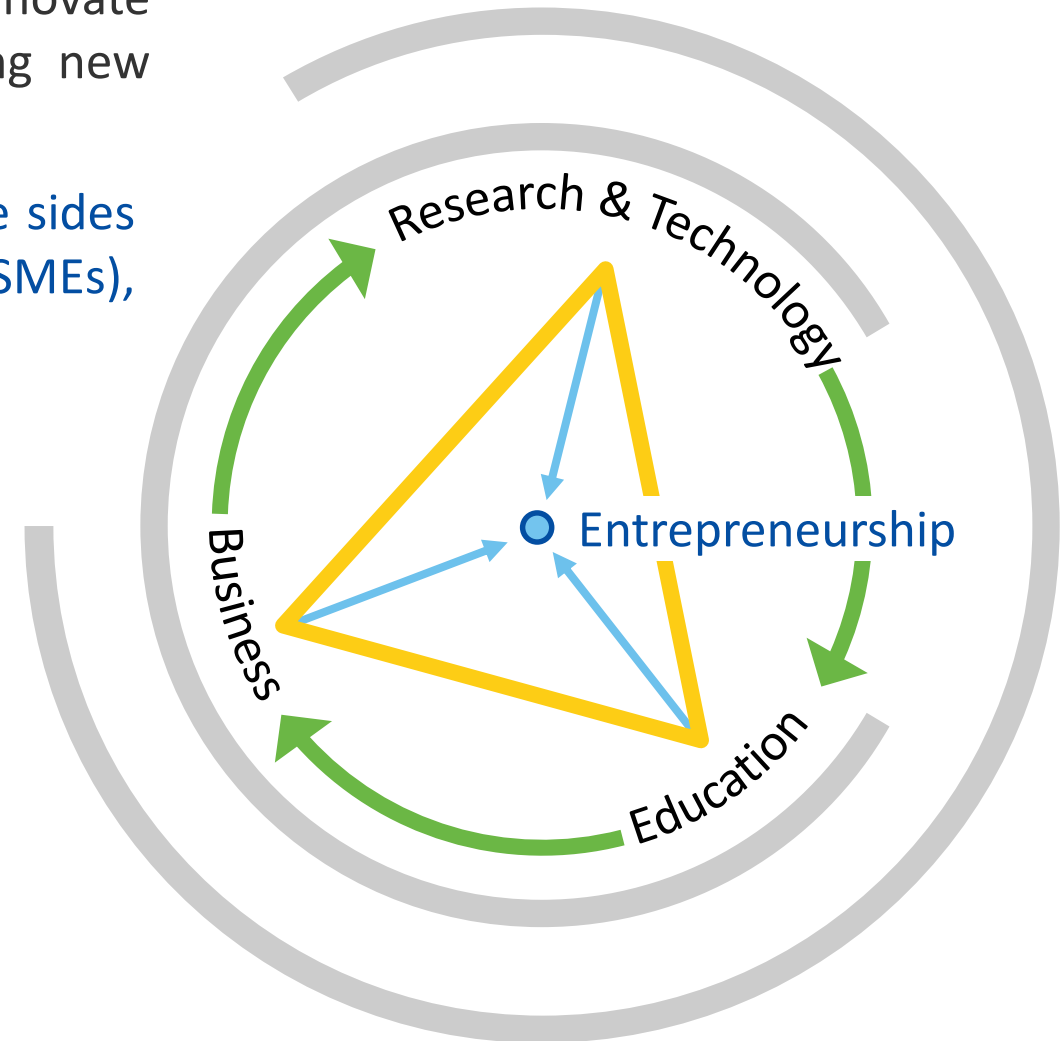
Student to Entrepreneur

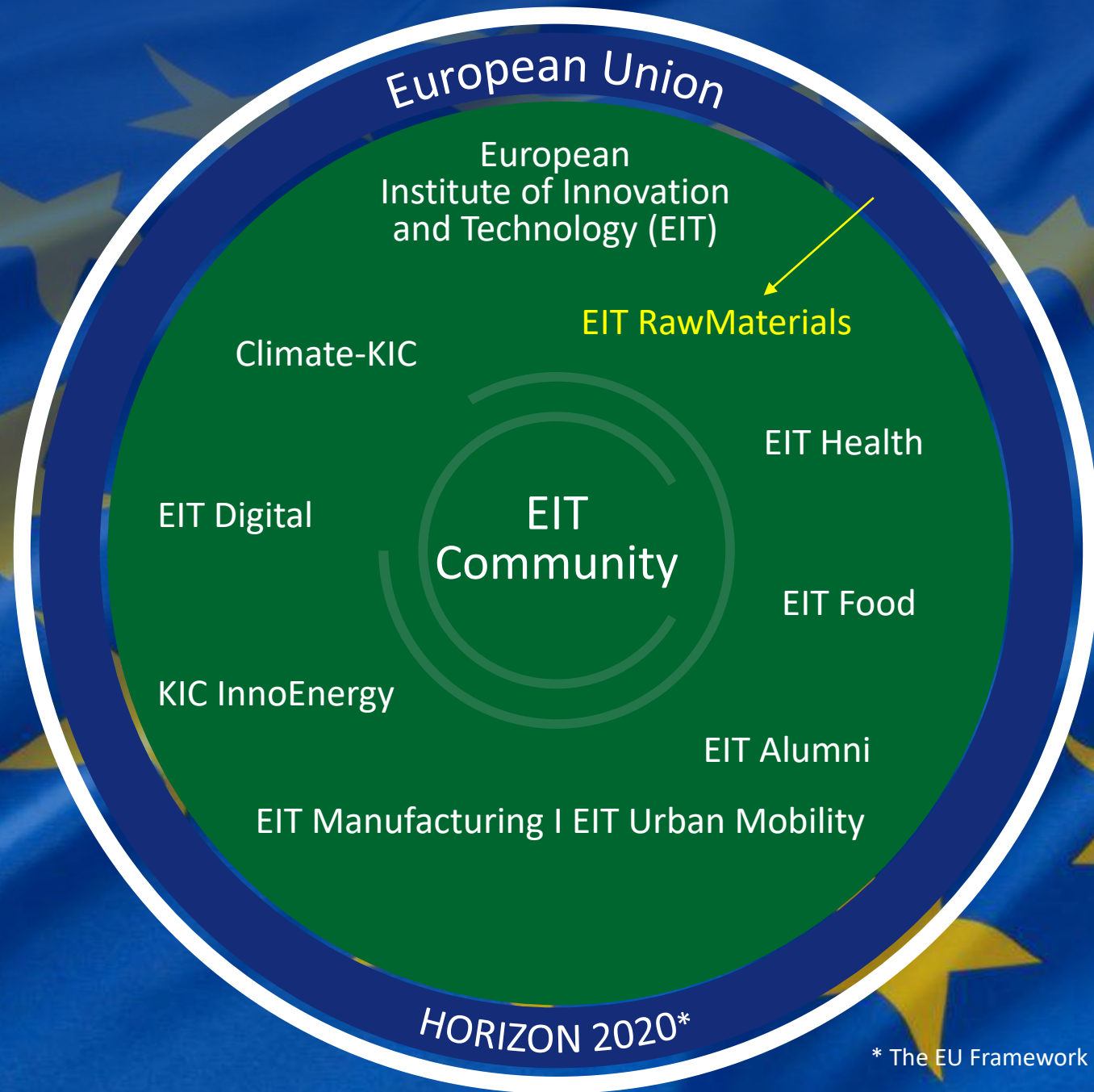


Idea to Product



Lab to Customer



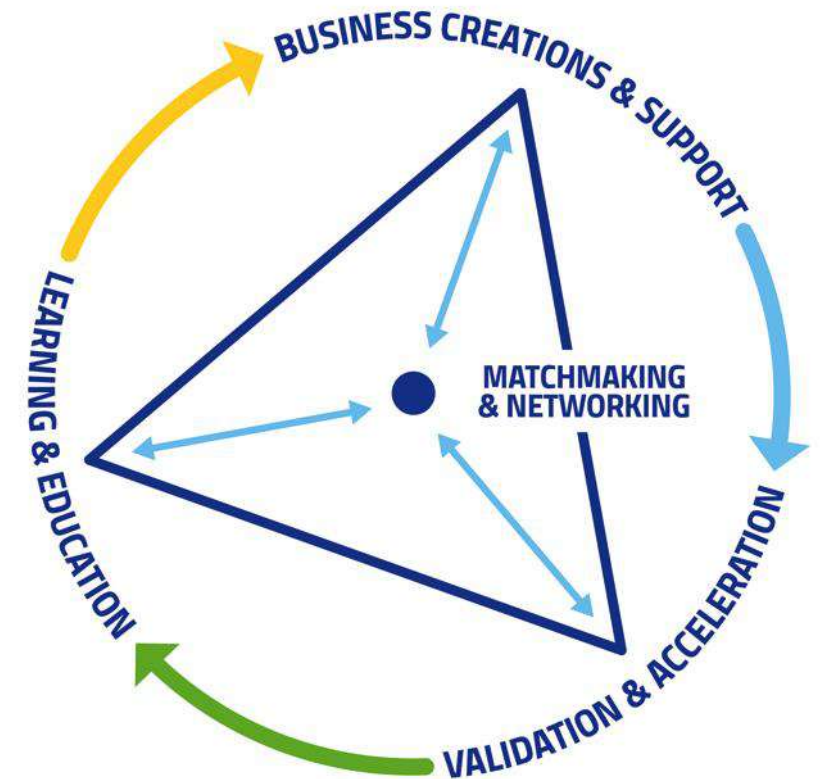


EIT RawMaterials vision and mission

EIT RawMaterials vision is to develop raw materials into a major strength for Europe. Our mission is to boost competitiveness, growth and the attractiveness of the raw material sector via radical innovation, new education approaches and guided entrepreneurship.

EIT RawMaterials strategic objectives are:

1. **Securing raw materials supply:** collaborating across the whole industrial value chain
2. **Designing solutions** for materials innovation, products and processes
3. **Closing material loops:** a radical shift from linear to circular thinking



A pan-European partner network

- Coverage of the entire raw materials value chain
- World's largest community in the raw materials sector
- 120+ Core and Associate partners
- 190 + Project partners
- 20+ EU countries
- 6 Co-location Centers (Innovation Hubs) across Europe
- Three Regional Innovation Hubs and two Regional innovation centers (RIS and RIC)
- Headquarter in Berlin, Germany

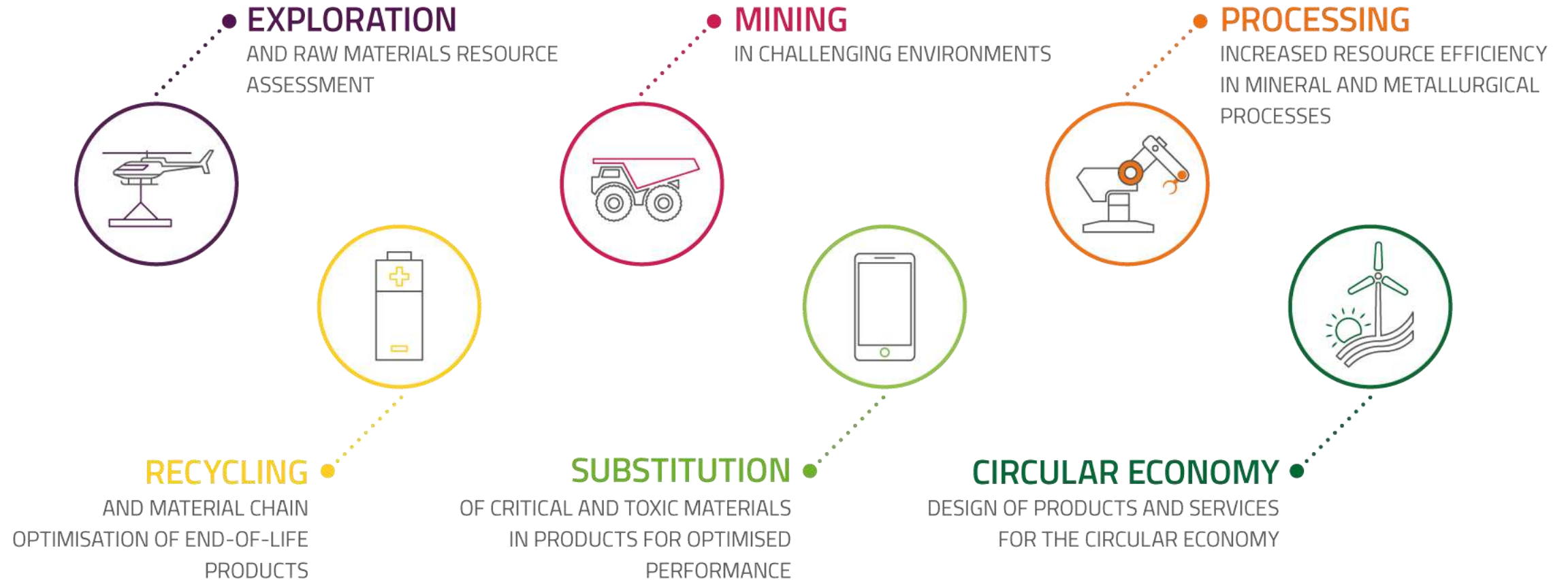
- Countries covered by EIT RawMaterials
- EU countries
- Innovation Hub (Co-Location Center)
- RIC (Regional Innovation Center)
- RIS HUB (Regional Innovation Scheme)



EIT RawMaterials in EIT RIS countries and regions

ESEE Eastern and South-Eastern Europe	Albania, Bosnia, Bulgaria, Croatia, Cyprus, Greece, Hungary, Kosovo, Macedonia, Montenegro, Romania, Serbia, Slovakia, Slovenia	Innovation hub (CLC) East	6 of 14 countries covered by 10 partners 3 Hubs
“Visegrád 4” Central Europe	Czech Republic, Hungary, Poland, Slovakia	Innovation hub (CLC) East	3 of 4 countries covered by 10 partners 1 Hub
The Mediterranean	Cyprus, Greece, (Southern) Italy, Malta, Spain, Portugal	Innovation hubs (CLCs) South East Central	4 of 6 countries covered by 18 partners 1 Hub
The Baltics	Estonia, Latvia, Lithuania	Innovation hub (CLC) Baltic Sea	1 of 3 countries covered by 1 partner Hub considered

EIT RawMaterials Innovation Themes



The Value Chain of Raw Materials



Exploration



Mining



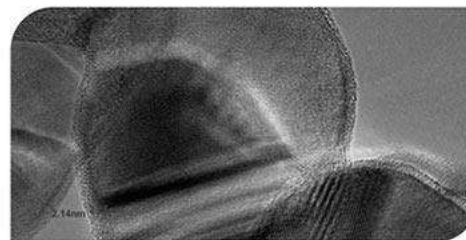
Transport



Smelting



Production



Substitution



End-Use Markets



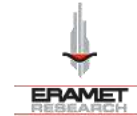
Recycling



Circular Economy

Partners

Industry



Partners

Research and Technology Organisations

ASTER

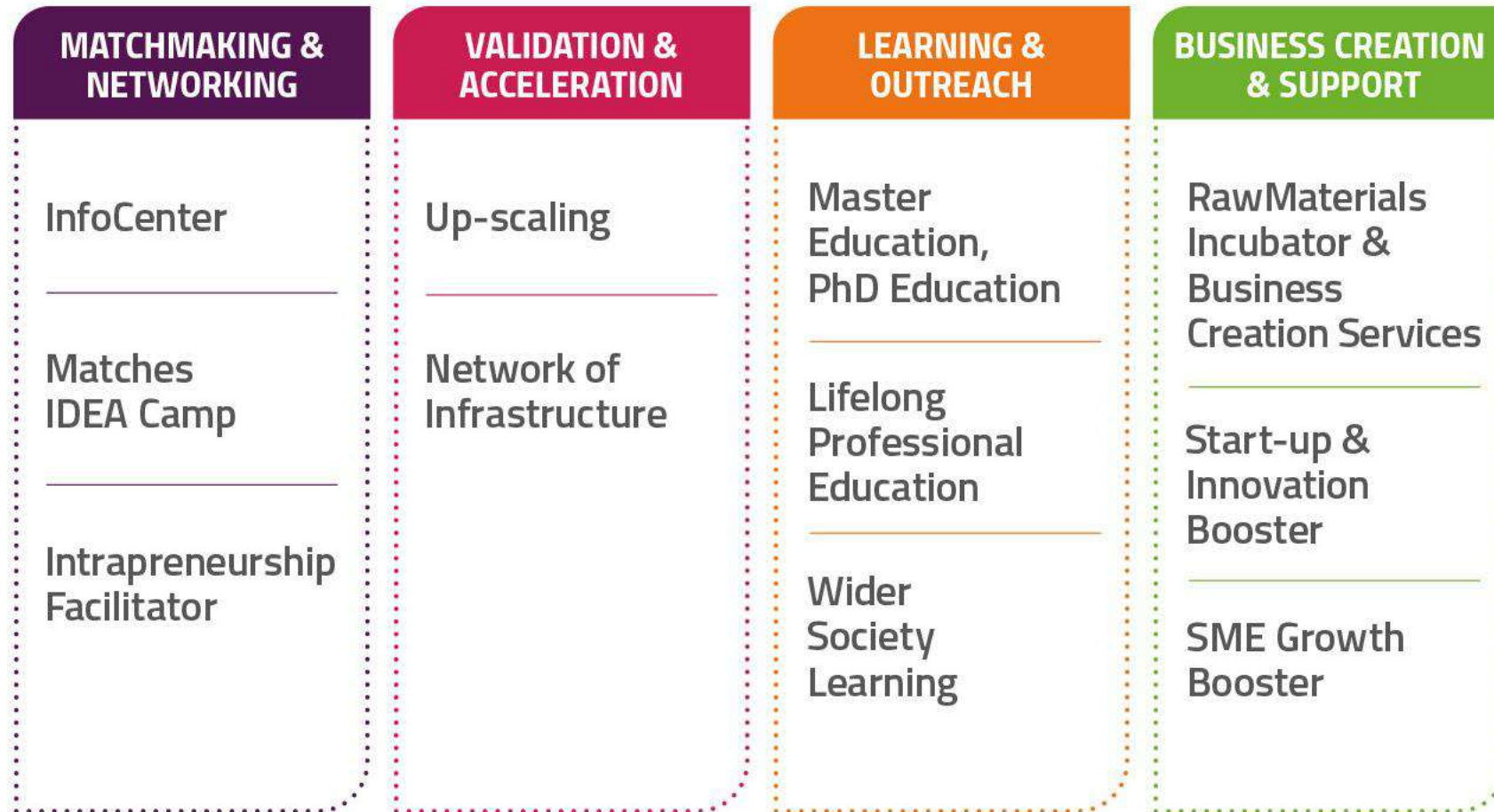


Partners

Universities



EIT RawMaterials - Innovation, Education and Entrepreneurship Activities



Learning & Outreach

- **PhD and Master education:** Modules for Programmes focus on raw materials themes and industry needs
- **Professional education:** Industry needs focused education for qualified professionals
- **Wider society learning:** Aims to raise awareness of the general public
- **Raw Materials Academy**
- **Raw Material Alumni**



90 partner-driven projects in four domains of learning

Along the entire Life Cycle of Innovators

Wider Society – Exposure to raw materials

School Pupils – creating excitement and curiosity

Public – building awareness

Higher Education – T-shaped entrepreneurs

Technical expertise, raw materials value chain

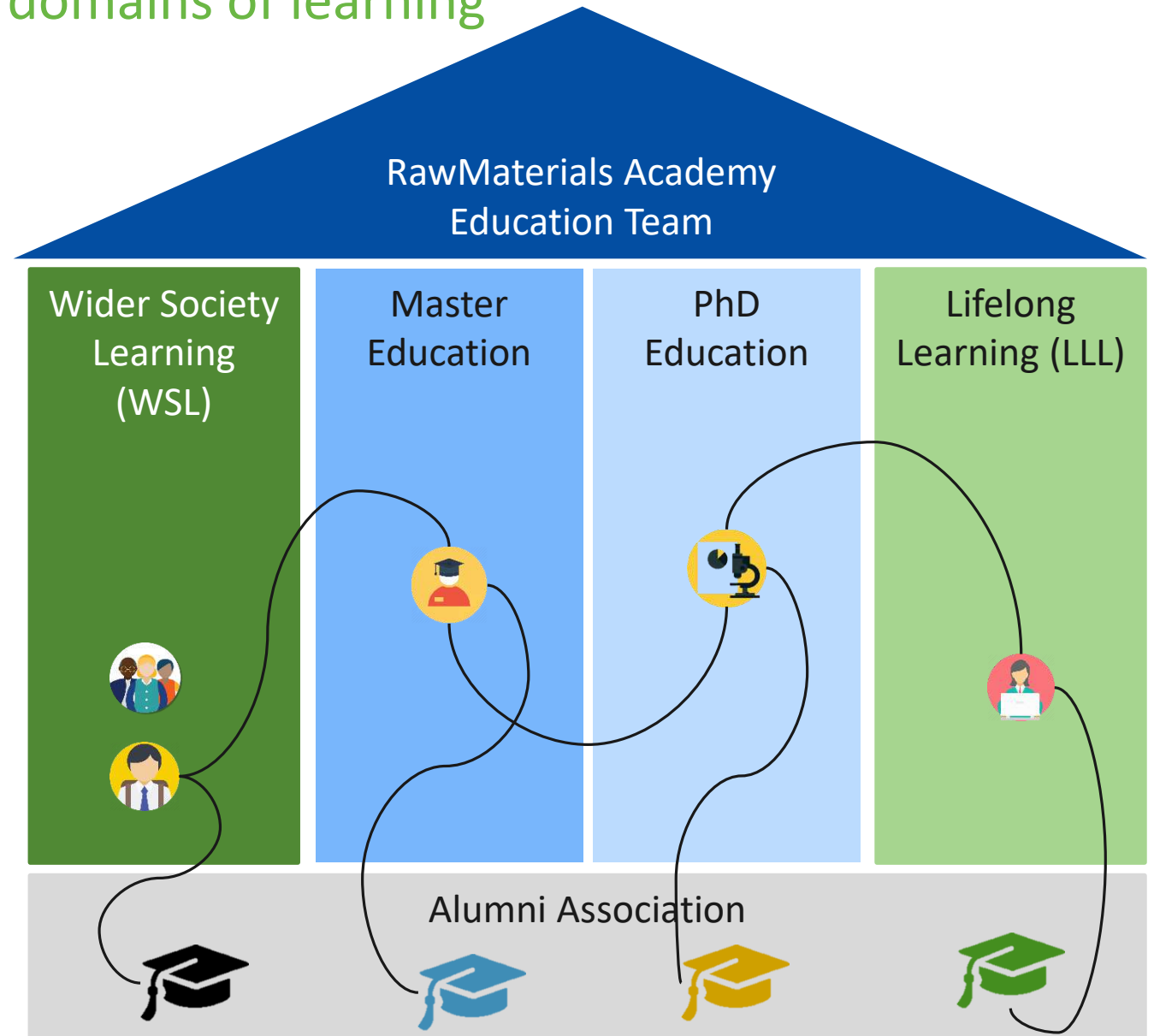
Innovation & Entrepreneurship

Evolving, transforming economy

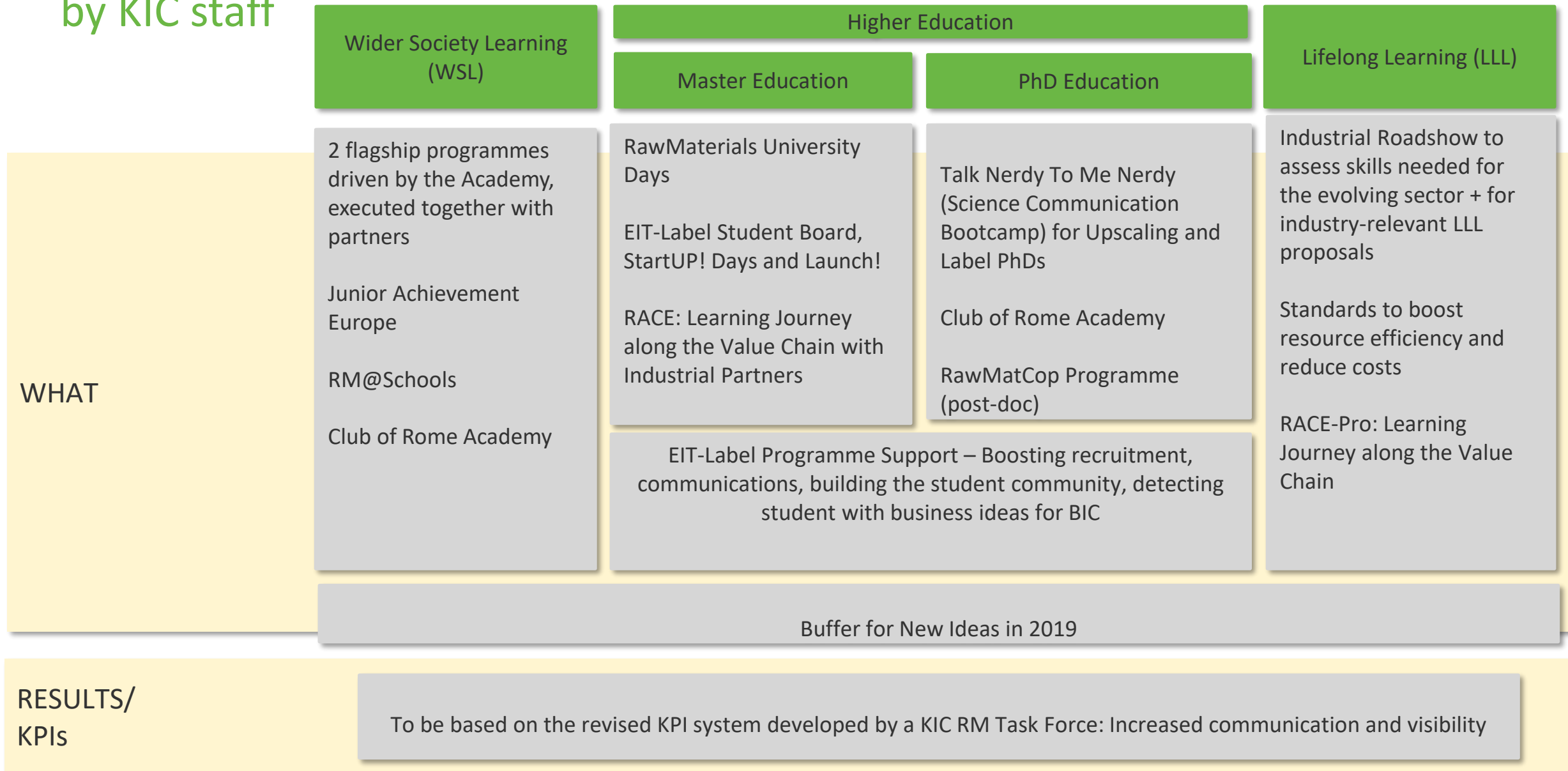
Lifelong Learning – Professionals

Needs of industry

Evolving, transforming economy



RawMaterials Academy – Centrally-driven activities by KIC staff



EIT-Label Master Programmes

- Six EIT-Label Master programmes covering the entire value chain
- Programmes apply for the EIT-Label
 - 30 ECTS of I&E education
 - Thesis research project with industry
 - Mobility
 - Fulfilment of 7 learning outcomes
- AVSA grants totaling EUR 9.000/student
- Master School
 - EIT Label Student Board
 - LabelLaunch Days
 - Joint Summer School tbd
 - RawMat Careers
- EIT-Label video - <https://www.youtube.com/watch?v=kfKRICJmhfo>






SINReM Master in Sustainable and Innovative Natural Resource Management

Awarded the EIT Label in 2017

Diploma	Joint diploma of International Master of Science in Sustainable and Innovative Natural Resource Management from Ghent University, TU Freiberg and Uppsala University – EIT Label Certificate
Credits	120 ECTS, 24 months
Language of instruction	English
Starts in	September
Requirements	A Bachelor degree (minimum 180 ECTS) in engineering or science including 15 ECTS in mathematics and/or physics and 10 ECTS in chemistry, or an equivalent qualification from a recognized university or engineering college. Proof of proficiency in English – for detailed requirements, please visit the programme website: sinrem.eu/admission/
Fees	European (EEA): 6.000€/year Non-European: 9.000€/year
Application Period	
Scholarships	




The Challenge

Sustainability is more than just a buzzword. Our materials are one of the fastest growing resources in the world. They are vital for a decarbonized world, sustainable energy and electronics. The challenge is to create a new model for the materials industry that is more sustainable, more innovative and more profitable.

In order to deal with the challenges, three leading European universities are cooperating to create a new European Master programme – the International Master of Science in Sustainable and Innovative Natural Resource Management (SINReM). SINReM will consist of a new Master of Science in Sustainable and Innovative Natural Resource Management and a new Master of Science in Sustainable and Innovative Natural Resource Management.

As part of SINReM, students will work together with industry partners to develop sustainable and innovative materials and processes. They will also have the opportunity to work on real-world projects and to gain valuable experience in the industry.

Year 1: Master of Science in Sustainable and Innovative Natural Resource Management

Year 2: Master of Science in Sustainable and Innovative Natural Resource Management

Year 1: Master of Science in Sustainable and Innovative Natural Resource Management

Year 2: Master of Science in Sustainable and Innovative Natural Resource Management

Intermin project

- Contribution to WP2
- Communciation and dissemination WP: we have send the link for questionnaire to our releven partners and mention the project in some of our meetings



RawMaterials
Connecting matters

RAW MATERIALS SUMMIT 2019

Connecting Innovation in the Raw Materials Sector

20 - 22 MAY 2019, BERLIN

FOR MORE PLEASE VISIT: [#RMSummit2019](https://twitter.com/RMSummit2019)



This activity has received funding from the European Institute of Innovation and Technology (EIT), a body of the European Union, under the Horizon 2020, the EU Framework Programme for Research and Innovation